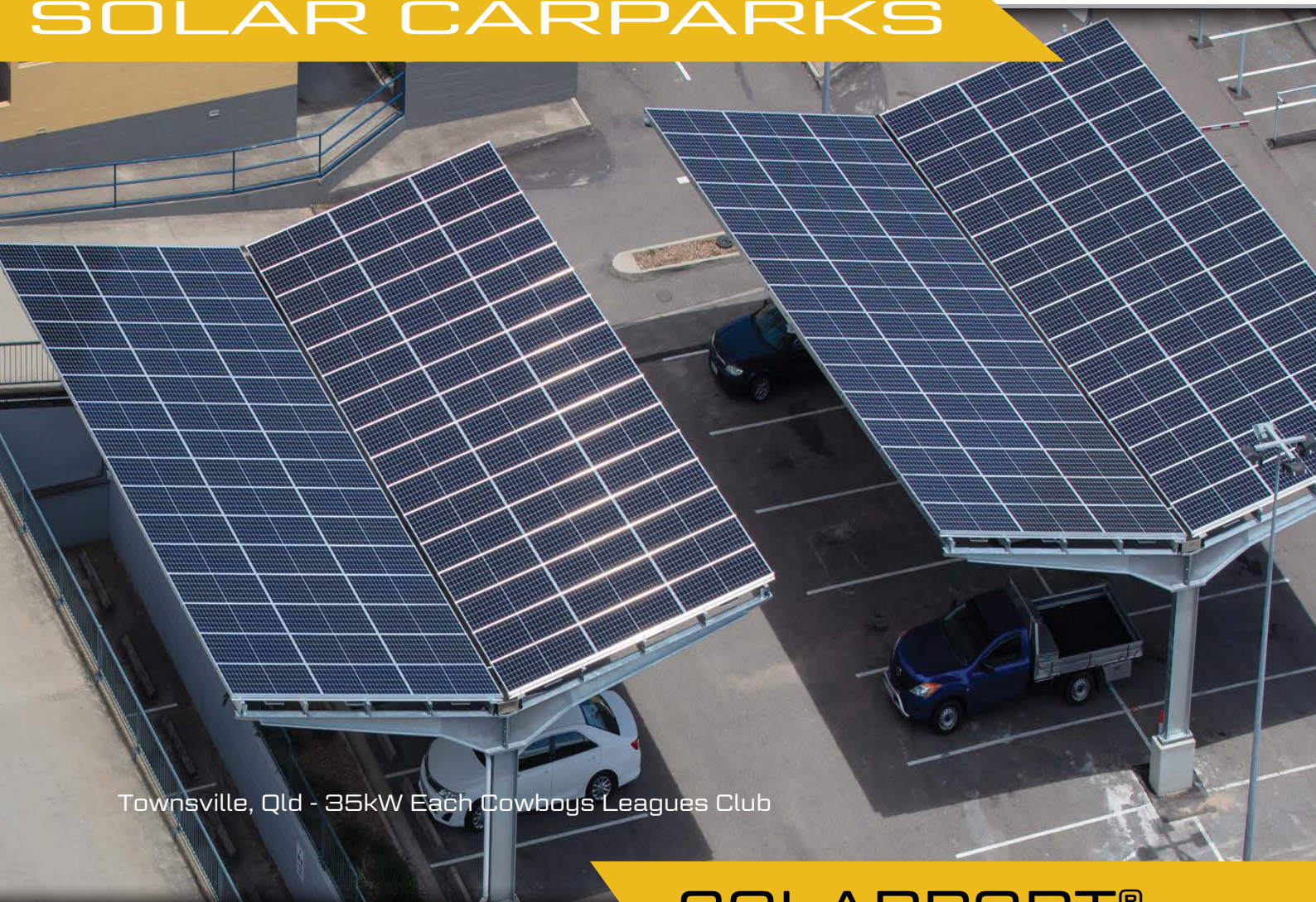


# SOLARPORT<sup>TM</sup>

## SOLAR CARPARKS



Townsville, Qld - 35kW Each Cowboys Leagues Club

## SOLARPORT<sup>®</sup>

A SOLAR SOLUTION FOR SPACE THAT NEEDS TO BE UTILISED.

High wind regions demand a new standard in solar carpark design, with a view to producing a modern, architecturally pleasing structure.

With that in mind, SolarPort provides both shelter and solar power generation.

The time-proven cantilever design of the SolarPort houses three vehicles per column and up to 9kW of PV in its basic form.

The SolarPort may also be expanded infinitely to house as many vehicles or solar panels as required.

This can be formatted in a three or four-module configuration.

Adjustable configurations and tilt means the SolarPort can be installed in various locations - allowing for optimal solar harvest.

SolarPort meets the rugged requirements of wind region C and D classification, allowing installation in cyclone areas.

For ground mounts we have chosen time proven rag bolts.

They are easily installed using our template, with builders and concreters familiar with this technique.

Cost effective multiple rag bolts can be installed to a project long before the final installation of the SolarPort.

The structure is hot-dipped galvanised, or alternatively, it may be painted with your corporate colours and logos.

Optional light boxes allow for advertising, enhanced safety and security at night.



Mullumbimby NSW - 100kW gull-wing solution located at the Byron Shire Council Offices.

#### FEATURES:

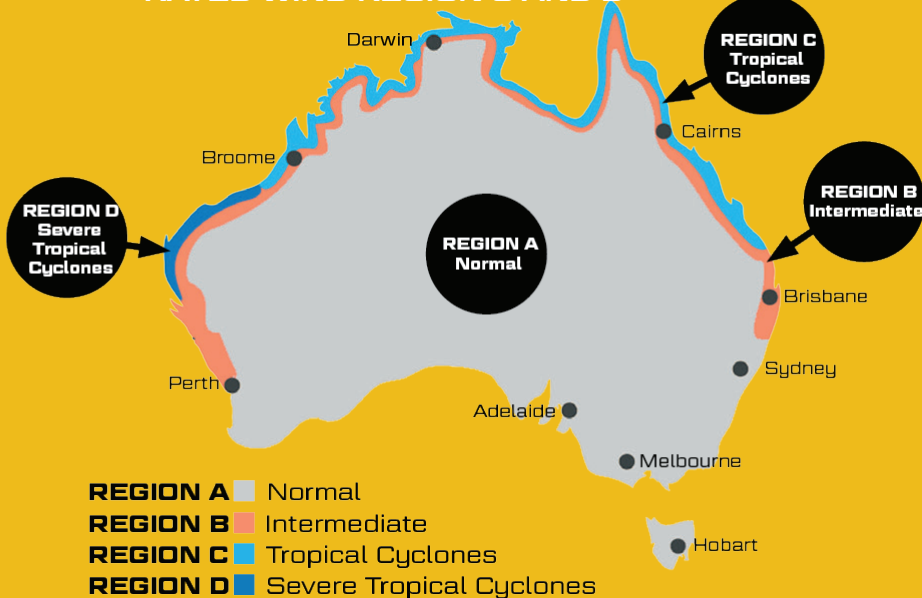
Wind region C and D.  
Fully galvanised  
Modern attractive design,  
Parks 3 cars with 9kW of solar per column. Infinitely expandable  
Simple rag bolt foundation or suspended slab mount.

#### OPTIONAL EXTRAS:

The Solarport is expandable with options - including electric vehicle charging stations, light boxes, corporate colours and logos for advertising.

This allows future proofing and customization of your installation.

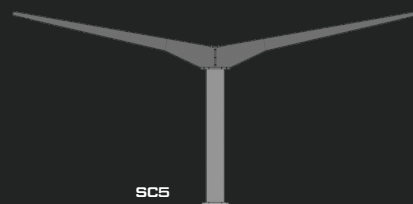
#### RATED WIND REGION C AND D



SC6



SC7



SC5

#### MULTIPLE CONFIGURATIONS

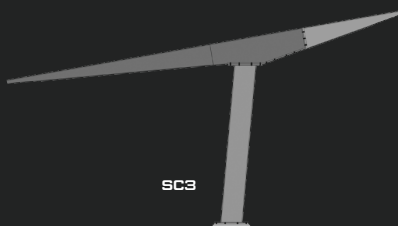
EASILY ALTERED TO SUIT ANY SITE OR ASPECT



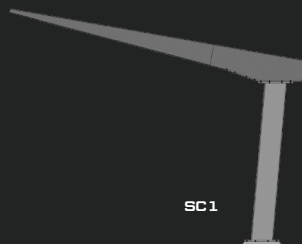
SC4



SC1



SC3



SC1